



JEFFERSON COUNTY ASSOCIATION
FOR GIFTED CHILDREN



A Conversation About GT

Thursday, Feb. 18, 2021





Welcome

Announcements & Introductions

JAGC Announcements

JAGC Elections

Join the JAGC Board!

Nominations accepted
Feb. 18 - March 4.

Election is March 27 -
April 4.

<https://www.jeffcogifted.org/election-2021.html>

Nominate a GT Champion!

GT Champion
nominations are due
March 31.

<https://www.jeffcogifted.org/gt-champion-award.html>

JAGC Monthly Newsletter

Sign up for the JAGC
newsletter for news
and updates.

<https://www.jeffcogifted.org/newsletter-signup.html>

Town Hall Panel

Featuring Dr. Susan Leach

Chief Student Success Officer, Jeffco Schools

Dr. Leach is responsible for developing, directing and rolling out systems and programs to serve students and families who require educational, physical, and emotional support beyond standard programming for special education, gifted and talented, health services, homebound instruction, student services, healthy schools, and student engagement.



Moderators

Guy Nahmiach, JAGC Board President

Heather Groff, GT teacher, JAGC Board Secretary

Jana Betlach, Teacher/Homeschool Enrichment, JAGC Board Director

Agenda

- 6:35-6:40 Advanced Learning Plans (ALPs)
- 6:40-7:15 Discussion
- 7:15-7:25 Q&A
- 7:25 Wrapup

Advanced Learning Plans (ALPs)



About Advanced Learning Plans (ALPs)

- **ALPs are created for students** who are formally identified as gifted and talented which can happen as early as Kindergarten. Jeffco's process can be found on the [website](#).
- **Early testing can be requested** by the parent through the district or school GT coordinator. The most common qualifying test is called the CogAT and is universally given in 2nd grade across Jeffco.
- **The ALP is a written legal document.** It is a plan for the student built by a team of school professionals and is specific for each child.



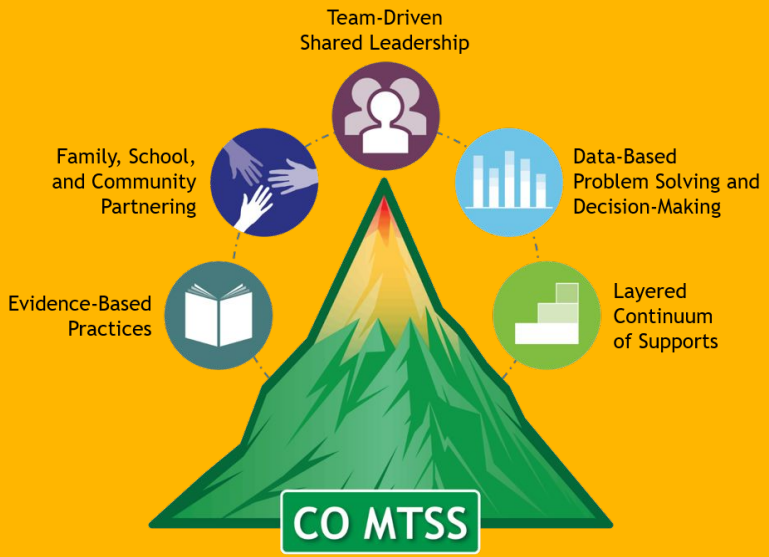
Advanced Learning Plans (ALPs)

- **ALPs remain with the student**, even when transferring in Colorado, through high school. There are a few different ways to approach ALP goals.
- **ALPs should be reviewed** each year for goal setting.
- **Who is involved?**
 - The teacher, school team, parents, the student.
- **Where can parents go for questions about ALPs?**
 - Student's teacher, and then the school team.
 - See the Jeffco GT Dept. website for details.

https://www.jeffcopublicschools.org/programs/gifted_talented/advanced_learning_plans

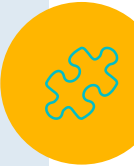

MTSS in Jeffco

Multi-Tiered System of Supports





MTSS Multi-Tiered System of Supports

- **MTSS is a process** to identify students in need of extra support for academics and/or behavior, including social-emotional learning.
 - **Teachers and Social-Emotional Learning staff** identify the need for this process.
 - **Why is this important?** MTSS provides a process to identify and problem solve for students who need academic and/or behavioral supports.
- 
- 

How Does MTSS Support Advanced Learners?

MTSS Multi-Tiered System of Supports

- **At GT Center schools**, even teachers with advanced training in gifted education can seek support for students with additional needs.
- **At neighborhood schools**, teachers who have a variety of needs within a classroom can seek support for each child.
- **For advanced and GT** programming, individual academic needs may exceed what is traditionally offered in the classroom.
- **Giftedness may bring** additional social-emotional needs that can be supported through MTSS process.

The Importance of Social-Emotional Learning



Social-Emotional Learning

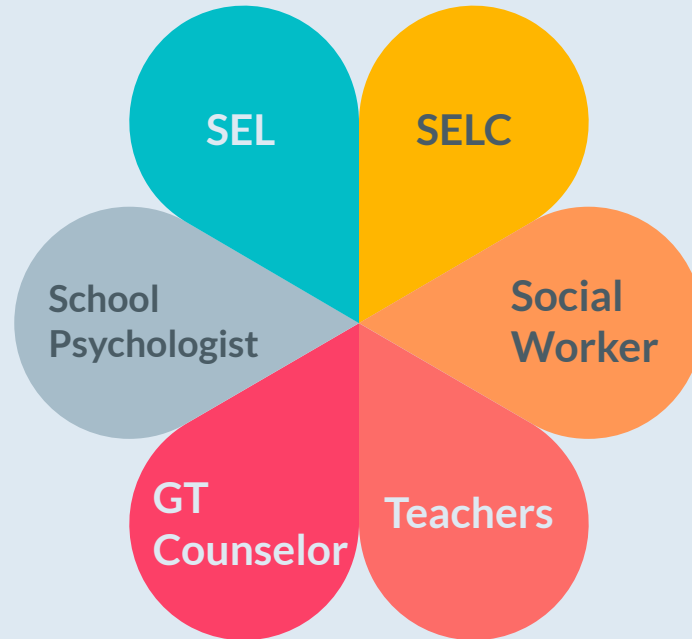
SEL in Jeffco

Social Emotional Learning (SEL) helps students acquire and apply the knowledge, attitudes and skills necessary to:

- **Understand and manage** emotions
- **Set and achieve positive goals**, feel and show empathy for others, establish and maintain positive relationships
- **Make responsible decisions.** Social and emotional skill building can have a positive impact on school climate, help students become good learners and prevent or reduce many risky behaviors, including drug use, violence, bullying and dropping out.

Who Is On The SEL Team?

Social-Emotional Learning





Social-Emotional Learning

SEL Team Responsibilities

SELCS Social Emotional Learning Counselors

Work within GT centers to support students with academic, social emotional and career development

SEL Specialists Social Emotional Learning Specialists

Teach social-emotional competencies to all students

GT Counselors

Work within GT centers to support students with academic, social emotional and career development

School Psychologists

Work with all students with more specifically defined academic and/or social, emotional and behavioral needs

Social Workers

Work with all students with more specifically defined academic and/or social, emotional and behavioral needs

Teachers

Identify student needs for academic and/or social, emotional and behavioral needs and support universal SEL through classroom climate and interactions.



Social-Emotional Learning

How Does SEL Support Help All Students?

- **SEL school wide initiatives** give all students common language, shared expectations, increases unity while decreases bullying
- **SEL sets the stage** for inclusion, acceptance of diversity
- **De-stigmatizes** mental health issues
- **Opens availability** to seek help for emotional support
- **Increases advocacy** efforts



Jeffco Mental Health Support

“We believe that we are stronger together. The more that people, families, schools, organizations, and communities work together to support positive mental health, coping skills, resiliency, and openness around discussing mental health, the better the result for everyone!”



Student Support

How Are Our Kids Doing This Year?



Student Support Needs for Hybrid & Remote Learning



Online Fatigue

Getting Organized

Understanding Assignments

Missing Friends

Completing Work

Mental health support

Finding Help

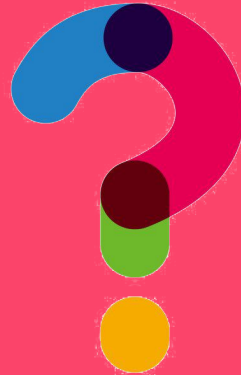


Needs to Address

- ✔ Learning Losses
- ✔ Re-engaging Students
- ✔ Mental Health Concerns
- ✔ Connecting Families With Resources

Questions?

Please add your questions in the Zoom chat.
We will address as many as time permits.





Thanks for Attending!

Any questions?

Email Dr. Leach: susan.leach@jeffco.k12.co.us

Email JAGC: info@jeffcogifted.org

Town Hall resources on the JAGC website:

<https://www.jeffcogifted.org/feb-18-gt-town-hall.html>



Credits

- Presentation template by [SlidesCarnival](#)
- Photographs by [Unsplash](#)